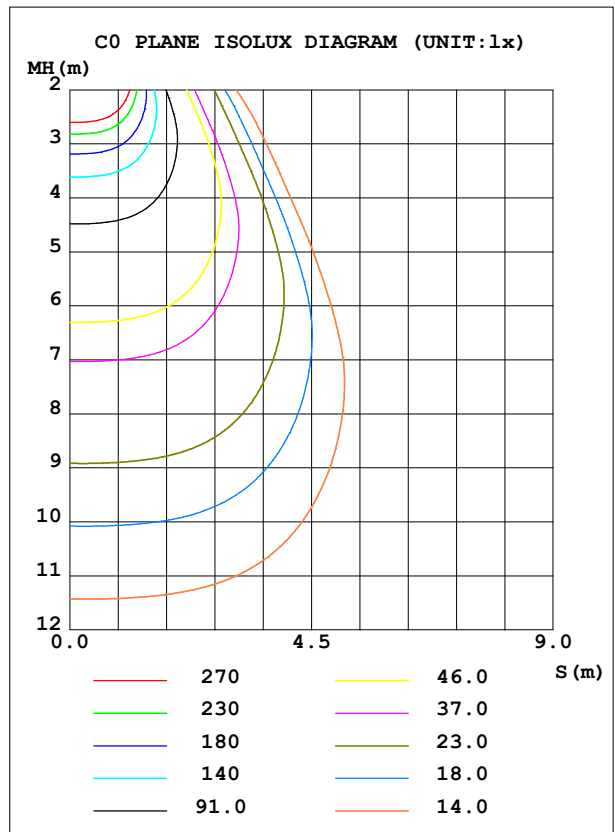
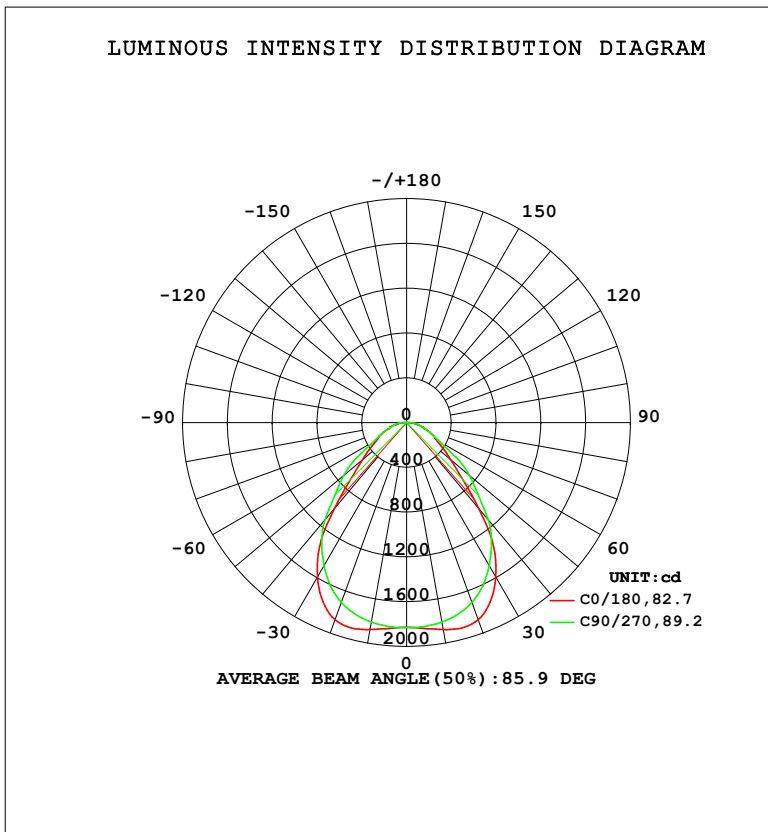


LUMINAIRE PHOTOMETRIC TEST REPORT

Test:U:221.34V I:0.1487A P:31.633W PF:0.9610 Freq:50.00Hz Lamp Flux:3803.87x1 lm		
NAME: 6060M-120LM-CCT(3000K-4000K)-UGR	TYPE: LED	WEIGHT:
SPEC.: 6060M-120LM-CCT(3000K-4000K)-UGR	DIM.: 595*595	SERIAL No.:
MFR.: JT	SUR.: 0.595*0.595	Shielding Angle:

DATA OF LAMP		PHOTOMETRIC DATA			
MODEL	67412	Imax (cd)	1899	S/MH (C0/180)	1.19
NOMINAL POWER (W)	32	LOR (%)	100.0	S/MH (C90/270)	1.20
RATED VOLTAGE (V)	220-240	TOTAL FLUX (lm)	3803.9	η UP, DN (C0-180)	0.0, 50.0
NOMINAL FLUX (lm)	3803.87	CIE CLASS	DIRECT	η UP, DN (C180-360)	0.0, 50.0
LAMPS INSIDE	1	η up (%)	0.1	CIBSE SHR NOM	1.25
TEST VOLTAGE (V)	220	η down (%)	99.9	CIBSE SHR MAX	1.25



C Range: 0 - 90DEG
 C Interval: 90.0DEG
 Test Speed: HIGH
 Temperature: 25.3 °C
 Operators: JT
 Test Date: 2024-12-15

γ Range: 0 - 180DEG
 γ Interval: 1.0DEG
 Test System: EVERFINE GO-2000A_V1 SYSTEM V2.0.295
 Humidity: 65.0%
 Test Distance: 7.578m [K=1.0264]
 Remarks:

ZONAL FLUX DIAGRAM

ZONAL FLUX DIAGRAM:

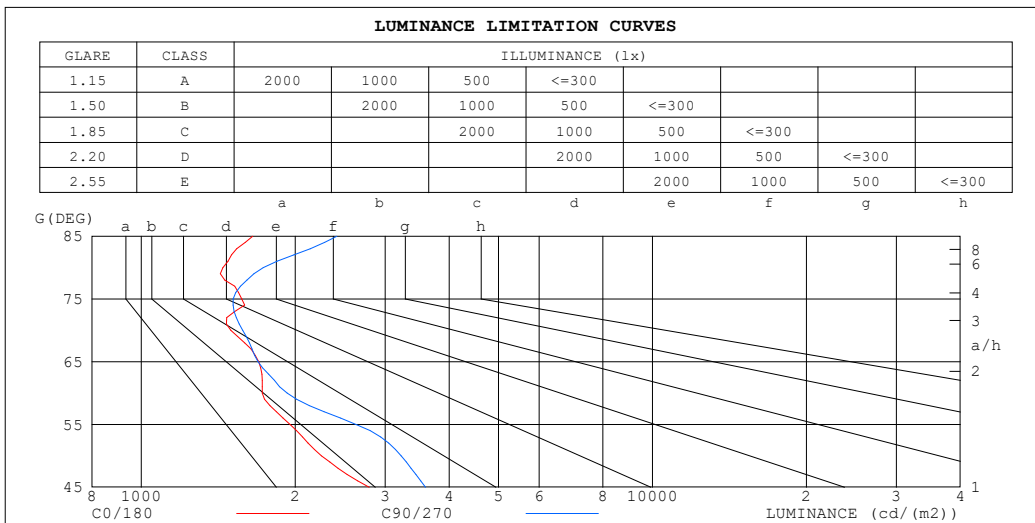
γ	C0	C90	C180	C270					γ	Φ zone	Φ total	%lum,lamp
10	1877	1809	1877	1809					0- 10	175.5	175.5	4.61,4.61
20	1872	1708	1872	1708					10- 20	517.7	693.2	18.2,18.2
30	1593	1477	1593	1477					20- 30	773.8	1467	38.6,38.6
40	1007	1136	1007	1136					30- 40	827.8	2295	60.3,60.3
50	512.6	733.4	512.6	733.4					40- 50	628.3	2923	76.8,76.8
60	305.2	341.3	305.2	341.3					50- 60	415.6	3339	87.8,87.8
70	181.3	191.3	181.3	191.3					60- 70	251.1	3590	94.4,94.4
80	88.76	106.5	88.76	106.5					70- 80	148.0	3738	98.3,98.3
90	0.1147	14.71	0.1147	14.71					80- 90	63.25	3801	99.9,99.9
100	0	0	0	0					90-100	0.6020	3802	99.9,99.9
110	0	0	0	0					100-110	0	3802	99.9,99.9
120	0	0	0	0					110-120	0	3802	99.9,99.9
130	0.2733	0.2160	0.2733	0.2160					120-130	0.0618	3802	99.9,99.9
140	0.7048	0.6105	0.7048	0.6105					130-140	0.3444	3802	100,100
150	1.074	1.008	1.074	1.008					140-150	0.5268	3803	100,100
160	1.511	1.478	1.511	1.478					150-160	0.5772	3803	100,100
170	1.904	1.886	1.904	1.886					160-170	0.4781	3804	100,100
180	2.125	2.097	2.125	2.097					170-180	0.1896	3804	100,100
DEG	LUMINOUS INTENSITY:cd									UNIT:lm		

C Range: 0 - 90DEG
 C Interval: 90.0DEG
 Test Speed: HIGH
 Temperature:25.3°C
 Operators:JT
 Test Date:2024-12-15

γ Range: 0 - 180DEG
 γ Interval: 1.0DEG
 Test System:EVERFINE GO-2000A_V1 SYSTEM V2.0.295
 Humidity:65.0%
 Test Distance:7.578m [K=1.0264]
 Remarks:

LUMINANCE LIMITATION CURVES

Test:U:221.34V I:0.1487A P:31.633W PF:0.9610 Freq:50.00Hz Lamp Flux:3803.87x1 lm		
NAME: 6060M-120LM-CCT(3000K-4000K)-UGR	TYPE: LED	WEIGHT:
SPEC.: 6060M-120LM-CCT(3000K-4000K)-UGR	DIM.: 595*595	SERIAL No.:
MFR.: JT	SUR.: 0.595*0.595	Shielding Angle:



LUMINANCE cd/(m2)		
G (DEG)	C0/180	C90/270
85	1651	2414
80	1444	1732
75	1572	1513
70	1497	1580
65	1697	1692
60	1724	1928
55	1954	2632
50	2253	3223
45	2791	3600

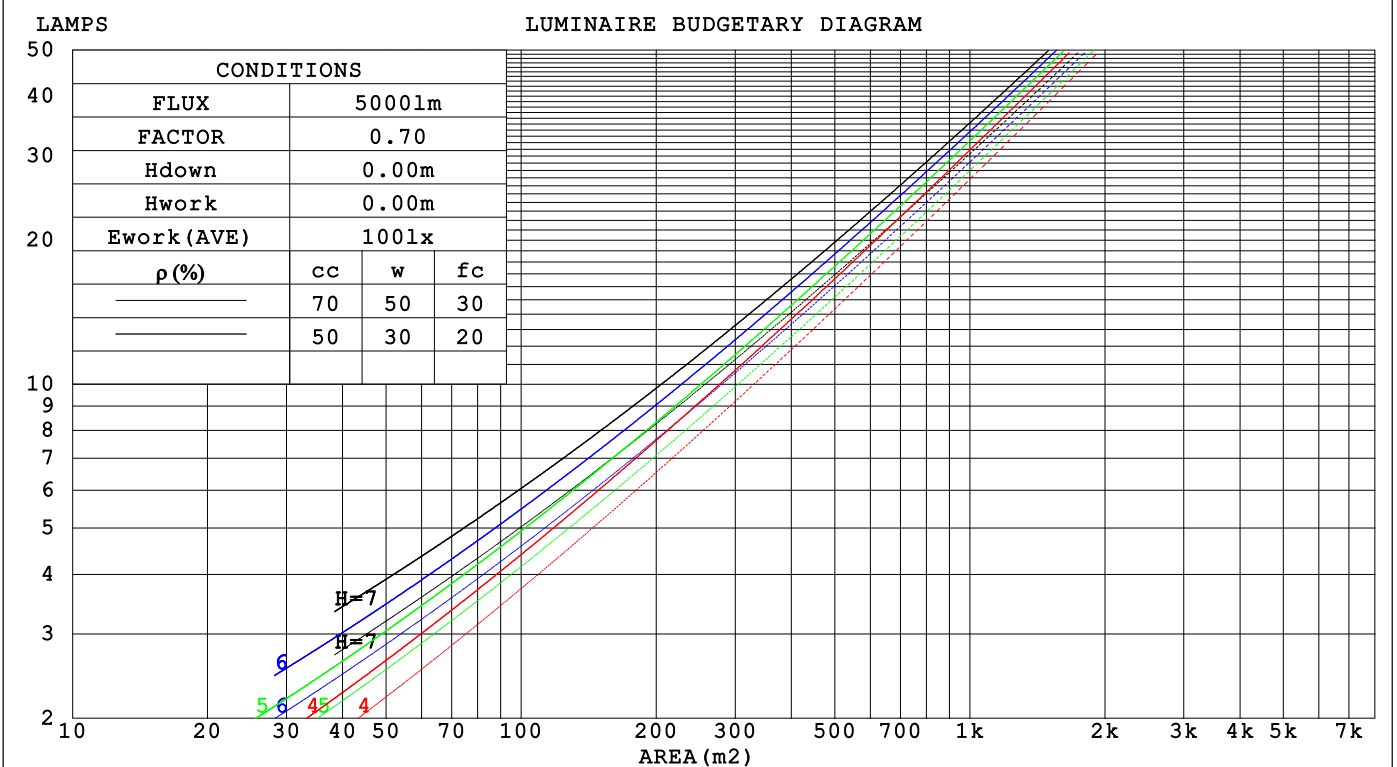
C Range: 0 - 90DEG
 C Interval: 90.0DEG
 Test Speed: HIGH
 Temperature:25.3 °C
 Operators:JT
 Test Date:2024-12-15

γ Range: 0 - 180DEG
 γ Interval: 1.0DEG
 Test System:EVERFINE GO-2000A_V1 SYSTEM V2.0.295
 Humidity:65.0%
 Test Distance:7.578m [K=1.0264]
 Remarks:

CU AND LUMINAIRE BUDGETARY ESTIMATE DIAGRAM

Test:U:221.34V I:0.1487A P:31.633W PF:0.9610 Freq:50.00Hz Lamp Flux:3803.87x1 lm		
NAME: 6060M-120LM-CCT(3000K-4000K)-UGR	TYPE: LED	WEIGHT:
SPEC.: 6060M-120LM-CCT(3000K-4000K)-UGR	DIM.: 595*595	SERIAL No.:
MFR.: JT	SUR.: 0.595*0.595	Shielding Angle:

ρcc	80%			70%			50%			30%			10%			0
	50%	30%	10%	50%	30%	10%	50%	30%	10%	50%	30%	10%	50%	30%	10%	
ρw																
ρfc																
RCR	RCR:Room Cavity Ratio Coefficients of Utilization(CU)															
0.0	1.19	1.19	1.19	1.16	1.16	1.16	1.11	1.11	1.11	1.06	1.06	1.06	1.02	1.02	1.02	.00
1.0	1.06	1.02	.99	1.04	1.01	.98	.00	.97	.94	.96	.94	.92	.92	.91	.89	.87
2.0	.95	.89	.84	.93	.87	.83	.89	.85	.81	.86	.82	.79	.83	.80	.77	.75
3.0	.85	.78	.72	.83	.77	.72	.81	.75	.70	.78	.73	.69	.75	.71	.68	.66
4.0	.77	.69	.63	.75	.68	.63	.73	.67	.62	.71	.65	.61	.69	.64	.60	.58
5.0	.70	.62	.56	.68	.61	.55	.66	.60	.55	.65	.59	.54	.63	.58	.54	.52
6.0	.63	.55	.50	.63	.55	.49	.61	.54	.49	.59	.53	.49	.58	.52	.48	.46
7.0	.58	.50	.45	.57	.50	.44	.56	.49	.44	.54	.48	.44	.53	.48	.44	.42
8.0	.54	.46	.40	.53	.45	.40	.52	.45	.40	.50	.44	.40	.49	.44	.40	.38
9.0	.49	.42	.37	.49	.42	.37	.48	.41	.37	.47	.41	.36	.46	.40	.36	.35
10.0	.46	.39	.34	.45	.38	.34	.44	.38	.34	.44	.38	.33	.43	.37	.33	.32



C Range: 0 - 90DEG
 C Interval: 90.0DEG
 Test Speed: HIGH
 Temperature:25.3°C
 Operators:JT
 Test Date:2024-12-15

γ Range: 0 - 180DEG
 γ Interval: 1.0DEG
 Test System:EVERFINE GO-2000A_V1 SYSTEM V2.0.295
 Humidity:65.0%
 Test Distance:7.578m [K=1.0264]
 Remarks:

WEC AND CCEC

Test:U:221.34V I:0.1487A P:31.633W PF:0.9610 Freq:50.00Hz Lamp Flux:3803.87x1 lm		
NAME: 6060M-120LM-CCT(3000K-4000K)-UGR	TYPE: LED	WEIGHT:
SPEC.: 6060M-120LM-CCT(3000K-4000K)-UGR	DIM.: 595*595	SERIAL No.:
MFR.: JT	SUR.: 0.595*0.595	Shielding Angle:

ρ _{CC}	80%			70%			50%			30%			10%			0
ρ _w	50%	30%	10%	50%	30%	10%	50%	30%	10%	50%	30%	10%	50%	30%	10%	0
ρ _{fc}	20%			20%			20%			20%			20%			0
RCR	RCR:Room Cavity Ratio						Wall Exitance Coefficients(WEC)									
0.0																
1.0	.266	.151	.048	.259	.148	.047	.246	.141	.045	.234	.135	.043	.222	.129	.042	
2.0	.250	.137	.042	.244	.135	.041	.233	.130	.040	.222	.125	.039	.213	.120	.038	
3.0	.234	.124	.037	.229	.122	.037	.219	.118	.036	.209	.115	.035	.201	.111	.034	
4.0	.218	.113	.033	.214	.112	.033	.205	.109	.032	.197	.106	.032	.189	.103	.031	
5.0	.204	.104	.030	.200	.103	.030	.192	.100	.029	.185	.098	.029	.178	.095	.029	
6.0	.191	.096	.027	.188	.095	.027	.181	.093	.027	.174	.091	.027	.168	.089	.026	
7.0	.180	.089	.025	.176	.088	.025	.170	.086	.025	.164	.084	.025	.159	.083	.024	
8.0	.169	.083	.023	.166	.082	.023	.161	.080	.023	.156	.079	.023	.151	.077	.023	
9.0	.160	.077	.022	.157	.077	.021	.152	.075	.021	.147	.074	.021	.143	.073	.021	
10.0	.151	.072	.020	.149	.072	.020	.144	.071	.020	.140	.070	.020	.136	.068	.020	

ρ _{CC}	80%			70%			50%			30%			10%			0
ρ _w	50%	30%	10%	50%	30%	10%	50%	30%	10%	50%	30%	10%	50%	30%	10%	0
ρ _{fc}	20%			20%			20%			20%			20%			0
RCR	RCR:Room Cavity Ratio						Ceiling Cavity Exitance Coefficients(CCEC)									
0.0																
1.0	.191	.191	.191	.163	.163	.163	.111	.111	.111	.064	.064	.064	.020	.020	.020	
2.0	.178	.157	.138	.152	.135	.119	.104	.093	.082	.060	.054	.048	.019	.017	.015	
3.0	.167	.133	.104	.143	.114	.090	.098	.079	.062	.057	.046	.037	.018	.015	.012	
4.0	.158	.115	.080	.136	.099	.069	.093	.069	.049	.054	.040	.029	.017	.013	.009	
5.0	.150	.101	.063	.129	.087	.055	.088	.061	.039	.051	.036	.023	.016	.012	.008	
6.0	.142	.090	.052	.122	.078	.045	.084	.054	.032	.049	.032	.019	.016	.010	.006	
7.0	.135	.081	.043	.116	.071	.037	.080	.049	.026	.047	.029	.016	.015	.010	.005	
8.0	.129	.074	.036	.111	.065	.032	.077	.045	.022	.044	.027	.013	.014	.009	.004	
9.0	.123	.069	.031	.106	.059	.027	.073	.042	.019	.043	.025	.012	.014	.008	.004	
10.0	.117	.064	.027	.101	.055	.024	.070	.039	.017	.041	.023	.010	.013	.008	.003	
10.0	.112	.059	.024	.096	.052	.021	.067	.036	.015	.039	.021	.009	.013	.007	.003	

C Range: 0 - 90DEG
 C Interval: 90.0DEG
 Test Speed: HIGH
 Temperature:25.3 °C
 Operators:JT
 Test Date:2024-12-15

γ Range: 0 - 180DEG
 γ Interval: 1.0DEG
 Test System:EVERFINE GO-2000A_V1 SYSTEM V2.0.295
 Humidity:65.0%
 Test Distance:7.578m [K=1.0264]
 Remarks:

UGR(Unified Glare Rating) Table

Test:U:221.34V I:0.1487A P:31.633W PF:0.9610 Freq:50.00Hz Lamp Flux:3803.87x1 lm		
NAME: 6060M-120LM-CCT(3000K-4000K)-UGR	TYPE: LED	WEIGHT:
SPEC.: 6060M-120LM-CCT(3000K-4000K)-UGR	DIM.: 595*595	SERIAL No.:
MFR.: JT	SUR.: 0.595*0.595	Shielding Angle:

ceiling/cavity	0.7	0.7	0.5	0.5	0.3	0.7	0.7	0.5	0.5	0.3
walls	0.5	0.3	0.5	0.3	0.3	0.5	0.3	0.5	0.3	0.3
working plane	0.2	0.2	0.2	0.2	0.2	0.2	0.2	0.2	0.2	0.2

Room dimensions	Viewed crosswise					Viewed endwise				
x = 2H y = 2H	14.5	15.8	14.7	16.0	16.2	15.2	16.5	15.5	16.7	16.9
3H	15.4	16.6	15.7	16.8	17.1	15.9	17.2	16.2	17.4	17.6
4H	15.8	17.0	16.1	17.3	17.5	16.3	17.5	16.6	17.7	18.0
6H	16.2	17.3	16.5	17.6	17.8	16.7	17.8	17.0	18.1	18.3
8H	16.4	17.4	16.7	17.7	18.0	17.0	18.0	17.3	18.3	18.6
12H	16.5	17.5	16.9	17.8	18.1	17.2	18.2	17.6	18.5	18.8
4H 2H	14.8	16.0	15.1	16.3	16.5	15.4	16.6	15.7	16.8	17.1
3H	15.9	17.0	16.3	17.2	17.5	16.4	17.4	16.7	17.7	18.0
4H	16.6	17.5	16.9	17.8	18.1	16.9	17.8	17.3	18.1	18.5
6H	17.1	17.9	17.5	18.3	18.6	17.5	18.3	17.9	18.6	19.0
8H	17.3	18.1	17.7	18.5	18.8	17.8	18.6	18.2	19.0	19.3
12H	17.5	18.3	18.0	18.6	19.0	18.2	18.9	18.6	19.3	19.7
8H 4H	16.8	17.5	17.2	17.9	18.3	17.1	17.9	17.5	18.2	18.6
6H	17.5	18.1	17.9	18.5	18.9	17.9	18.5	18.3	18.9	19.3
8H	17.8	18.4	18.3	18.8	19.3	18.3	18.9	18.8	19.3	19.8
12H	18.2	18.7	18.7	19.1	19.6	18.9	19.4	19.4	19.8	20.3
12H 4H	16.8	17.5	17.2	17.9	18.3	17.1	17.8	17.5	18.2	18.6
6H	17.6	18.1	18.0	18.6	19.0	17.9	18.5	18.4	18.9	19.4
8H	18.0	18.5	18.5	18.9	19.4	18.5	19.0	19.0	19.4	19.9

Variations with the observer position at spacings(CIE Pub.117):		
S = 1.0H	+ 0.4 / - 0.5	+ 0.3 / - 0.4
1.5H	+ 0.4 / - 0.5	+ 0.2 / - 0.4
2.0H	+ 0.5 / - 0.5	+ 0.8 / - 0.6

CIE Pub.117, 3804 lm Total Lamp Luminous Flux Corrected (8log(F/F0) = 4.6)
Area: 0.354 m2

C Range: 0 - 90DEG
C Interval: 90.0DEG
Test Speed: HIGH
Temperature:25.3°C
Operators:JT
Test Date:2024-12-15

γ Range: 0 - 180DEG
γ Interval: 1.0DEG
Test System:EVERFINE GO-2000A_V1 SYSTEM V2.0.295
Humidity:65.0%
Test Distance:7.578m [K=1.0264]
Remarks:

UTILIZATION FACTORS TABLE

Test:U:221.34V I:0.1487A P:31.633W PF:0.9610 Freq:50.00Hz Lamp Flux:3803.87x1 lm		
NAME: 6060M-120LM-CCT(3000K-4000K)-UGR	TYPE: LED	WEIGHT:
SPEC.: 6060M-120LM-CCT(3000K-4000K)-UGR	DIM.: 595*595	SERIAL No.:
MFR.: JT	SUR.: 0.595*0.595	Shielding Angle:

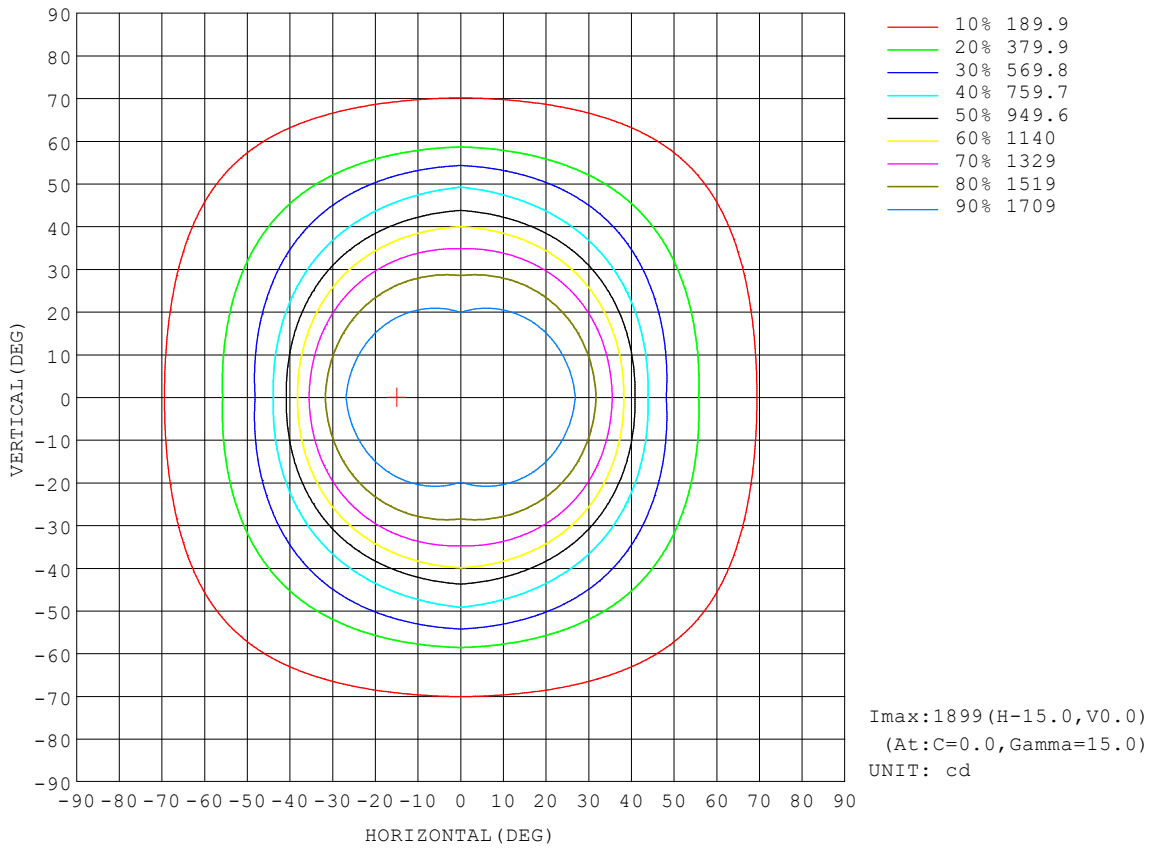
REFLECTANCE										
Ceiling	0.8	0.8	0.8	0.7	0.7	0.7	0.5	0.5	0.5	0
Walls	0.7	0.5	0.3	0.7	0.5	0.3	0.7	0.5	0.3	0
Working plane	0.2	0.2	0.2	0.2	0.2	0.2	0.2	0.2	0.2	0
ROOM INDEX	UTILIZATION FACTORS (PERCENT) $k(RI) \times RCR = 5$									
k = 0.60	67	57	51	66	57	51	65	56	51	45
0.80	76	67	60	75	66	60	74	66	60	54
1.00	84	75	69	83	74	68	81	75	68	62
1.25	90	81	76	89	81	75	86	79	74	68
1.50	94	86	81	93	85	80	90	84	79	73
2.00	100	93	88	98	92	87	95	90	85	78
2.50	103	96	92	101	95	91	97	93	89	81
3.00	106	100	95	104	98	94	100	96	92	84
4.00	109	104	100	106	102	99	102	99	96	88
5.00	111	107	103	108	105	102	104	101	99	90
ROOM INDEX	UF(total)									Direct
According to DIN EN 13032-2 2004			Suspended				SHRNOM = 1.25			

C Range: 0 - 90DEG
 C Interval: 90.0DEG
 Test Speed: HIGH
 Temperature:25.3°C
 Operators:JT
 Test Date:2024-12-15

γ Range: 0 - 180DEG
 γ Interval: 1.0DEG
 Test System:EVERFINE GO-2000A_V1 SYSTEM V2.0.295
 Humidity:65.0%
 Test Distance:7.578m [K=1.0264]
 Remarks:

ISOCANDELA DIAGRAM

Test:U:221.34V I:0.1487A P:31.633W PF:0.9610 Freq:50.00Hz Lamp Flux:3803.87x1 lm		
NAME: 6060M-120LM-CCT(3000K-4000K)-UGR	TYPE: LED	WEIGHT:
SPEC.: 6060M-120LM-CCT(3000K-4000K)-UGR	DIM.: 595*595	SERIAL No.:
MFR.: JT	SUR.: 0.595*0.595	Shielding Angle:

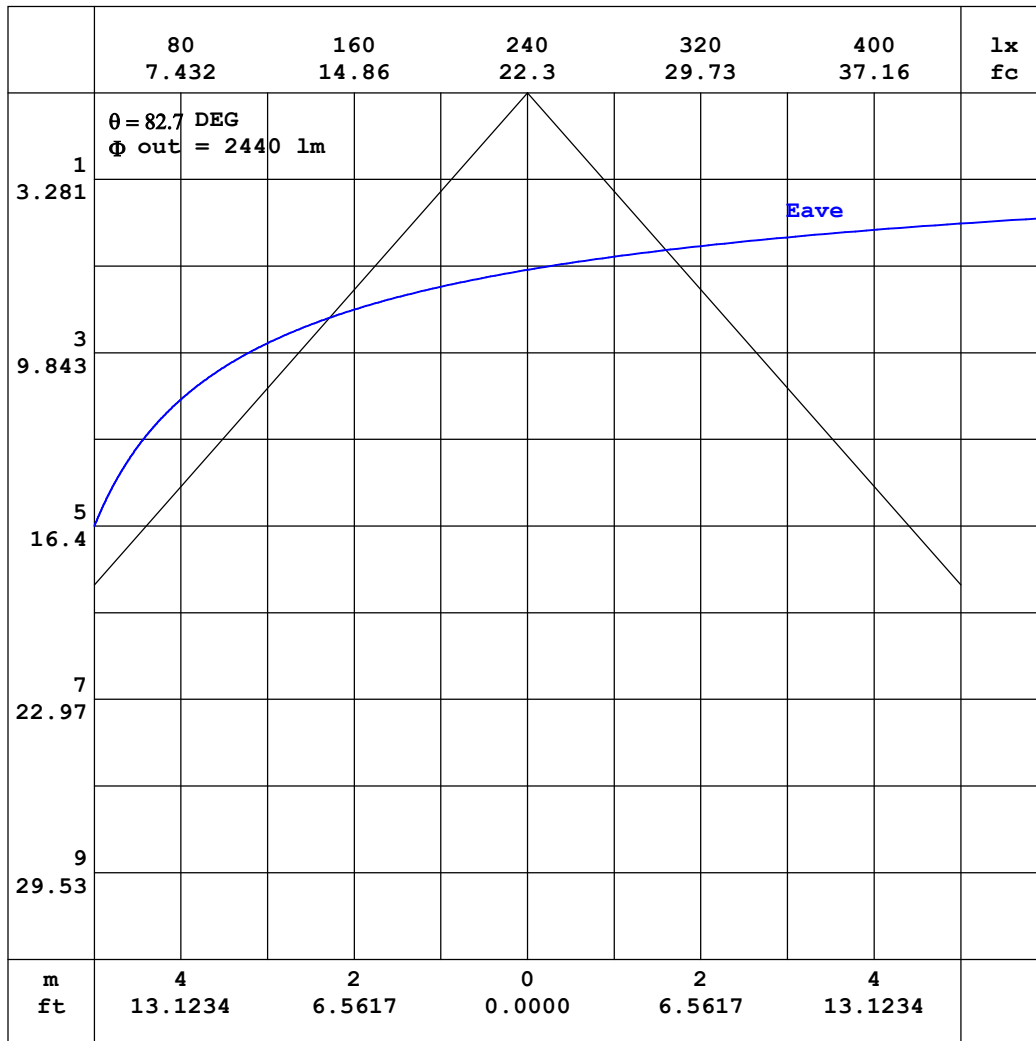


C Range: 0 - 90DEG
 C Interval: 90.0DEG
 Test Speed: HIGH
 Temperature:25.3°C
 Operators:JT
 Test Date:2024-12-15

γ Range: 0 - 180DEG
 γ Interval: 1.0DEG
 Test System:EVERFINE GO-2000A_V1 SYSTEM V2.0.295
 Humidity:65.0%
 Test Distance:7.578m [K=1.0264]
 Remarks:

AAI CURVES

Test:U:221.34V I:0.1487A P:31.633W PF:0.9610 Freq:50.00Hz Lamp Flux:3803.87x1 lm		
NAME: 6060M-120LM-CCT(3000K-4000K)-UGR	TYPE: LED	WEIGHT:
SPEC.: 6060M-120LM-CCT(3000K-4000K)-UGR	DIM.: 595*595	SERIAL No.:
MFR.: JT	SUR.: 0.595*0.595	Shielding Angle:



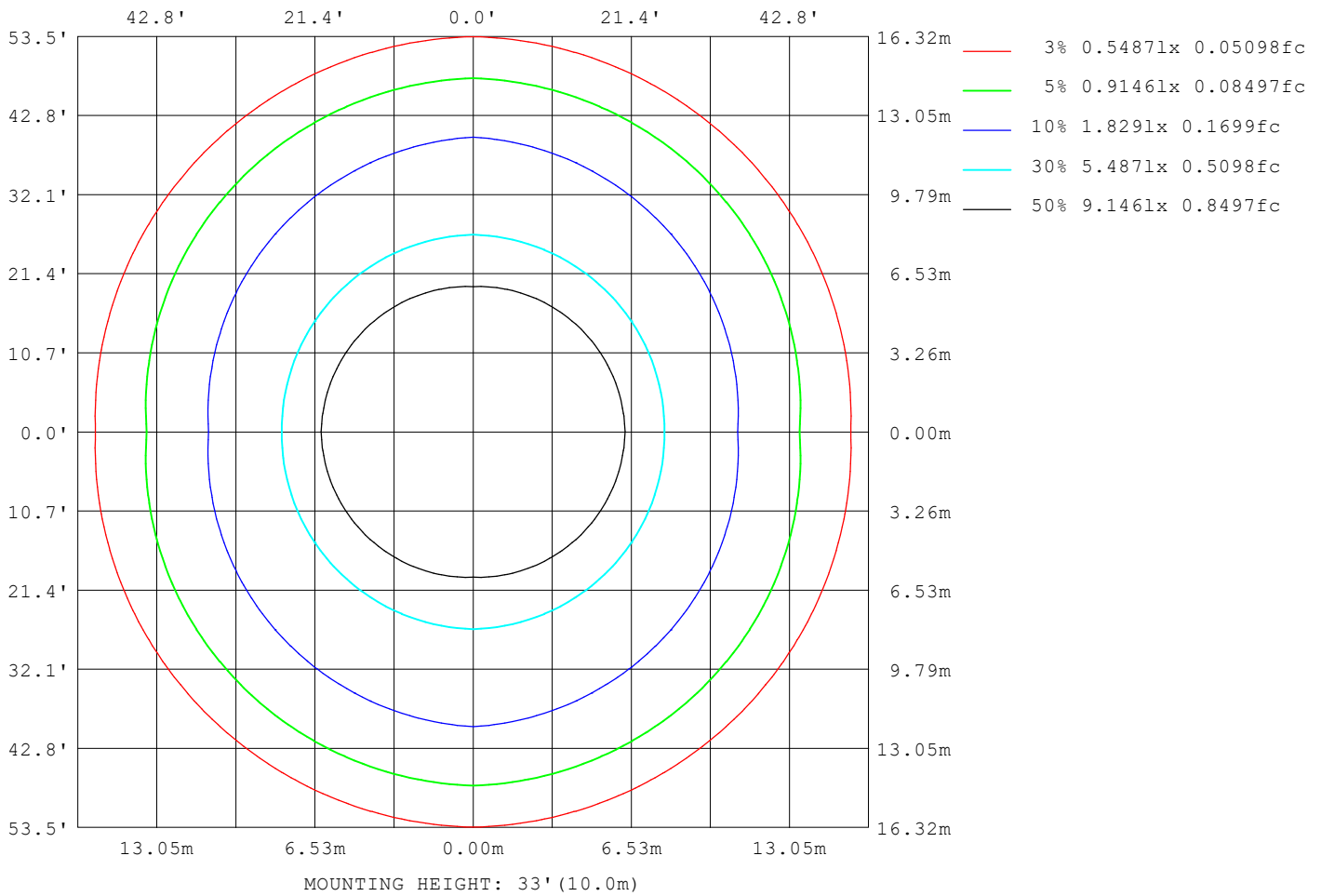
Note: The Curves indicate the illuminated area and the average illumination when the luminaire is at different distance.

C Range: 0 - 90DEG
C Interval: 90.0DEG
Test Speed: HIGH
Temperature: 25.3 °C
Operators: JT
Test Date: 2024-12-15

γ Range: 0 - 180DEG
γ Interval: 1.0DEG
Test System: EVERFINE GO-2000A_V1 SYSTEM V2.0.295
Humidity: 65.0%
Test Distance: 7.578m [K=1.0264]
Remarks:

ISOLUX DIAGRAM

Test:U:221.34V I:0.1487A P:31.633W PF:0.9610 Freq:50.00Hz Lamp Flux:3803.87x1 lm		
NAME: 6060M-120LM-CCT(3000K-4000K)-UGR	TYPE: LED	WEIGHT:
SPEC.: 6060M-120LM-CCT(3000K-4000K)-UGR	DIM.: 595*595	SERIAL No.:
MFR.: JT	SUR.: 0.595*0.595	Shielding Angle:



C Range: 0 - 90DEG
 C Interval: 90.0DEG
 Test Speed: HIGH
 Temperature:25.3°C
 Operators:JT
 Test Date:2024-12-15

γ Range: 0 - 180DEG
 γ Interval: 1.0DEG
 Test System:EVERFINE GO-2000A_V1 SYSTEM V2.0.295
 Humidity:65.0%
 Test Distance:7.578m [K=1.0264]
 Remarks:

LED Avg.L Report

Test:U:221.34V I:0.1487A P:31.633W PF:0.9610 Freq:50.00Hz Lamp Flux:3803.87x1 lm		
NAME: 6060M-120LM-CCT(3000K-4000K)-UGR	TYPE: LED	WEIGHT:
SPEC.: 6060M-120LM-CCT(3000K-4000K)-UGR	DIM.: 595*595	SERIAL No.:
MFR.: JT	SUR.: 0.595*0.595	Shielding Angle:

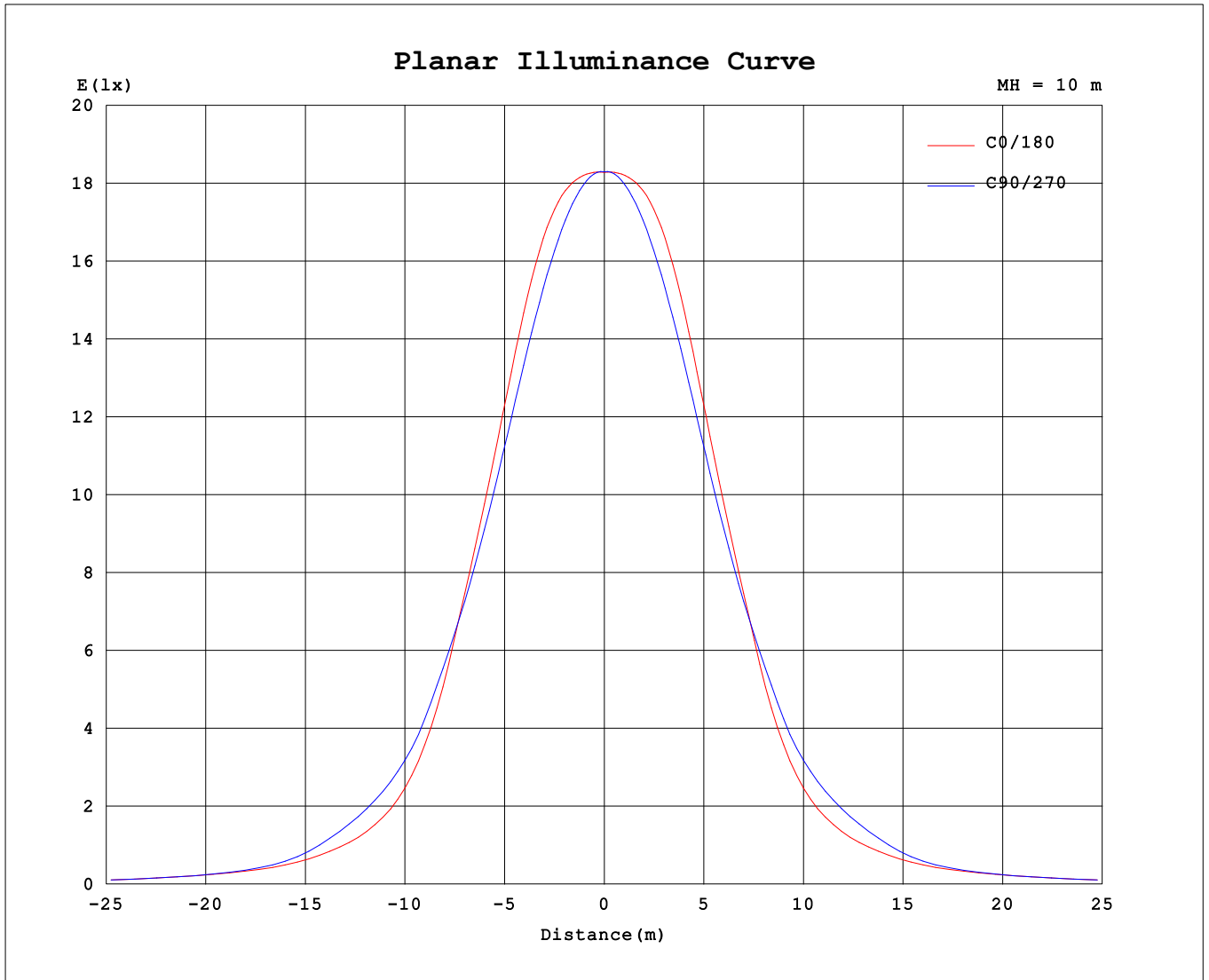
AvgL	cd/m2
L_0~180 (65) av	1697
L_0~180 (75) av	1572
L_0~180 (85) av	1651
L_90~270 (65) av	1692
L_90~270 (75) av	1513
L_90~270 (85) av	2414
L_45 (65) av	1694
L_45 (75) av	1535
L_45 (85) av	2128

Standard: GB/T 29293-2012

C Range: 0 - 90DEG
 C Interval: 90.0DEG
 Test Speed: HIGH
 Temperature:25.3℃
 Operators:JT
 Test Date:2024-12-15

γ Range: 0 - 180DEG
 γ Interval: 1.0DEG
 Test System:EVERFINE GO-2000A_V1 SYSTEM V2.0.295
 Humidity:65.0%
 Test Distance:7.578m [K=1.0264]
 Remarks:

Planar Illuminance Curve



C Range: 0 - 90DEG
C Interval: 90.0DEG
Test Speed: HIGH
Temperature: 25.3 °C
Operators: JT
Test Date: 2024-12-15

γ Range: 0 - 180DEG
γ Interval: 1.0DEG
Test System: EVERFINE GO-2000A_V1 SYSTEM V2.0.295
Humidity: 65.0%
Test Distance: 7.578m [K=1.0264]
Remarks:

LUMINOUS DISTRIBUTION INTENSITY DATA

Test:U:221.34V I:0.1487A P:31.633W PF:0.9610 Freq:50.00Hz Lamp Flux:3803.87x1 lm		
NAME: 6060M-120LM-CCT(3000K-4000K)-UGR	TYPE: LED	WEIGHT:
SPEC.: 6060M-120LM-CCT(3000K-4000K)-UGR	DIM.: 595*595	SERIAL No.:
MFR.: JT	SUR.: 0.595*0.595	Shielding Angle:

Table--1

UNIT: cd

C (DEG) \ γ (DEG)	0	90	180	270															
0	1828	1830	1828	1830															
5	1845	1828	1845	1828															
10	1877	1809	1877	1809															
15	1899	1772	1899	1772															
20	1872	1708	1872	1708															
25	1768	1609	1768	1609															
30	1593	1477	1593	1477															
35	1360	1323	1360	1323															
40	1007	1136	1007	1136															
45	699	901	699	901															
50	513	733	513	733															
55	397	534	397	534															
60	305	341	305	341															
65	254	253	254	253															
70	181	191	181	191															
75	144	139	144	139															
80	88.8	106	88.8	106															
85	50.9	74.5	50.9	74.5															
90	0.11	14.7	0.11	14.7															
95	0.00	0.00	0.00	0.00															
100	0.00	0.00	0.00	0.00															
105	0.00	0.00	0.00	0.00															
110	0.00	0.00	0.00	0.00															
115	0.00	0.00	0.00	0.00															
120	0.00	0.00	0.00	0.00															
125	0.05	0.03	0.05	0.03															
130	0.27	0.22	0.27	0.22															
135	0.49	0.41	0.49	0.41															
140	0.70	0.61	0.70	0.61															
145	0.89	0.82	0.89	0.82															
150	1.07	1.01	1.07	1.01															
155	1.28	1.23	1.28	1.23															
160	1.51	1.48	1.51	1.48															
165	1.72	1.70	1.72	1.70															
170	1.90	1.89	1.90	1.89															
175	2.04	2.02	2.04	2.02															
180	2.13	2.10	2.13	2.10															

C Range: 0 - 90DEG
 C Interval: 90.0DEG
 Test Speed: HIGH
 Temperature:25.3℃
 Operators:JT
 Test Date:2024-12-15

γ Range: 0 - 180DEG
 γ Interval: 1.0DEG
 Test System:EVERFINE GO-2000A_V1 SYSTEM V2.0.295
 Humidity:65.0%
 Test Distance:7.578m [K=1.0264]
 Remarks: