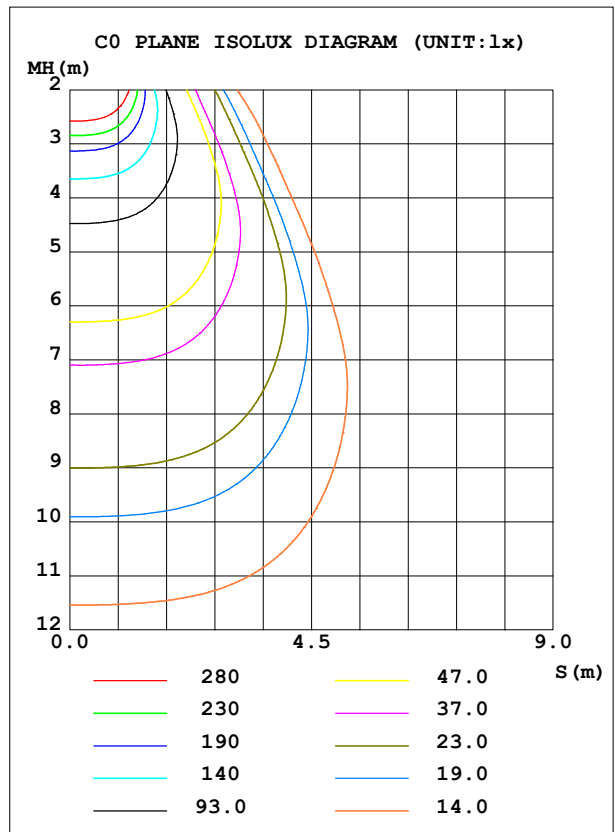
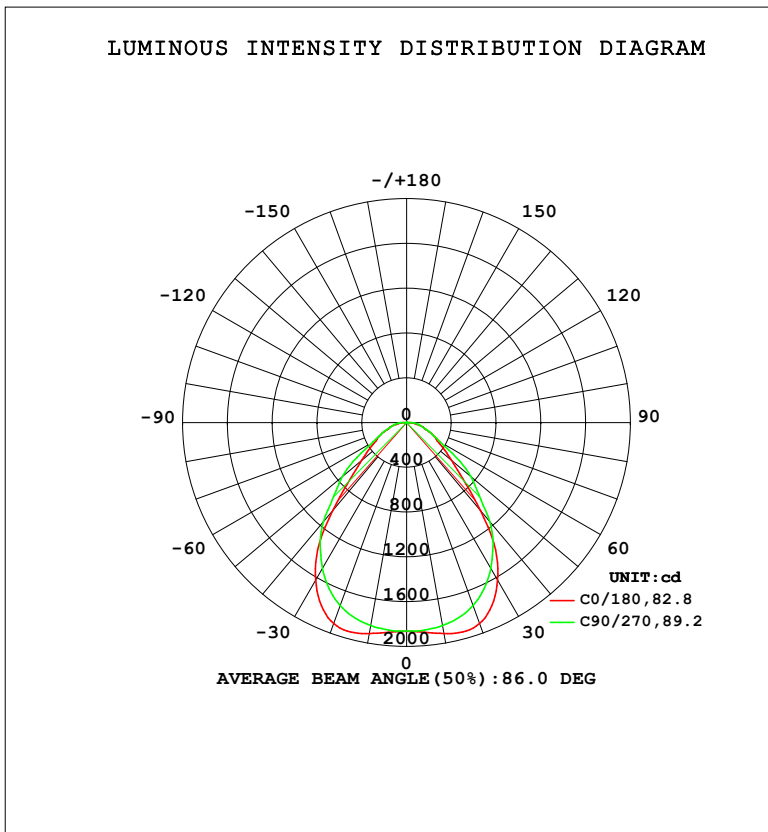


LUMINAIRE PHOTOMETRIC TEST REPORT

Test:U:221.38V I:0.1505A P:32.050W PF:0.9618 Freq:50.00Hz Lamp Flux:3872.8x1 lm		
NAME: 6060M-120LM-CCT(3000K-4000K)-UGR	TYPE: LED	WEIGHT:
SPEC.: 6060M-120LM-CCT(3000K-4000K)-UGR	DIM.: 595*595	SERIAL No.:
MFR.: JT	SUR.: 0.595*0.595	Shielding Angle:

DATA OF LAMP		PHOTOMETRIC DATA			
MODEL	67412	Imax (cd)	1937	S/MH(C0/180)	1.19
NOMINAL POWER (W)	32	LOR (%)	100.0	S/MH(C90/270)	1.20
RATED VOLTAGE (V)	220-240	TOTAL FLUX (lm)	3872.8	η UP, DN (C0-180)	0.0,50.0
NOMINAL FLUX (lm)	3872.8	CIE CLASS	DIRECT	η UP, DN (C180-360)	0.0,50.0
LAMPS INSIDE	1	η up (%)	0.1	CIBSE SHR NOM	1.25
TEST VOLTAGE (V)	220	η down (%)	99.9	CIBSE SHR MAX	1.25



C Range: 0 - 90DEG
 C Interval: 90.0DEG
 Test Speed: HIGH
 Temperature: 25.3 °C
 Operators: JT
 Test Date: 2024-12-15

γ Range: 0 - 180DEG
 γ Interval: 1.0DEG
 Test System: EVERFINE GO-2000A_V1 SYSTEM V2.0.295
 Humidity: 65.0%
 Test Distance: 7.578m [K=1.0528]
 Remarks:

ZONAL FLUX DIAGRAM

ZONAL FLUX DIAGRAM:

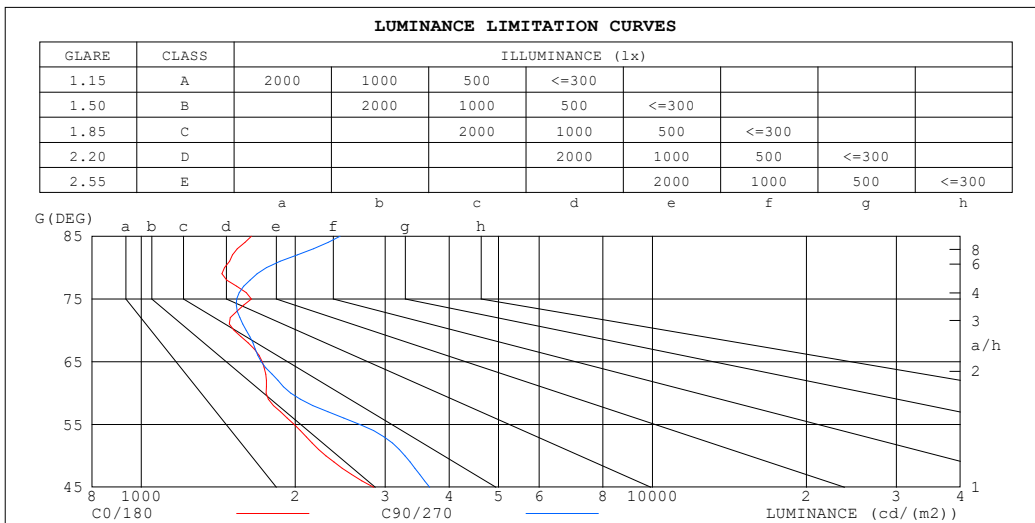
γ	C0	C90	C180	C270					γ	Φ zone	Φ total	%lum,lamp
10	1913	1841	1913	1841					0- 10	178.7	178.7	4.62,4.62
20	1909	1738	1909	1738					10- 20	527.4	706.1	18.2,18.2
30	1625	1503	1625	1503					20- 30	788.4	1495	38.6,38.6
40	1028	1157	1028	1157					30- 40	843.4	2338	60.4,60.4
50	522.6	746.3	522.6	746.3					40- 50	640.1	2978	76.9,76.9
60	310.5	346.7	310.5	346.7					50- 60	422.9	3401	87.8,87.8
70	183.9	194.1	183.9	194.1					60- 70	255.1	3656	94.4,94.4
80	89.34	108.1	89.34	108.1					70- 80	150.2	3806	98.3,98.3
90	0.1169	14.78	0.1169	14.78					80- 90	63.66	3870	99.9,99.9
100	0	0	0	0					90-100	0.6035	3871	99.9,99.9
110	0	0	0	0					100-110	0	3871	99.9,99.9
120	0	0	0	0					110-120	0	3871	99.9,99.9
130	0.2470	0.1926	0.2470	0.1926					120-130	0.0514	3871	99.9,99.9
140	0.6911	0.5818	0.6911	0.5818					130-140	0.3312	3871	100,100
150	1.075	0.9997	1.075	0.9997					140-150	0.5213	3872	100,100
160	1.524	1.470	1.524	1.470					150-160	0.5767	3872	100,100
170	1.933	1.883	1.933	1.883					160-170	0.4811	3873	100,100
180	2.160	2.100	2.160	2.100					170-180	0.1912	3873	100,100
DEG	LUMINOUS INTENSITY:cd									UNIT:lm		

C Range: 0 - 90DEG
 C Interval: 90.0DEG
 Test Speed: HIGH
 Temperature:25.3°C
 Operators:JT
 Test Date:2024-12-15

γ Range: 0 - 180DEG
 γ Interval: 1.0DEG
 Test System:EVERFINE GO-2000A_V1 SYSTEM V2.0.295
 Humidity:65.0%
 Test Distance:7.578m [K=1.0528]
 Remarks:

LUMINANCE LIMITATION CURVES

Test:U:221.38V I:0.1505A P:32.050W PF:0.9618 Freq:50.00Hz Lamp Flux:3872.8x1 lm		
NAME: 6060M-120LM-CCT(3000K-4000K)-UGR	TYPE: LED	WEIGHT:
SPEC.: 6060M-120LM-CCT(3000K-4000K)-UGR	DIM.: 595*595	SERIAL No.:
MFR.: JT	SUR.: 0.595*0.595	Shielding Angle:



LUMINANCE cd/(m2)		
G (DEG)	C0/180	C90/270
85	1642	2447
80	1453	1758
75	1642	1537
70	1519	1603
65	1723	1717
60	1754	1959
55	1990	2677
50	2297	3280
45	2847	3663

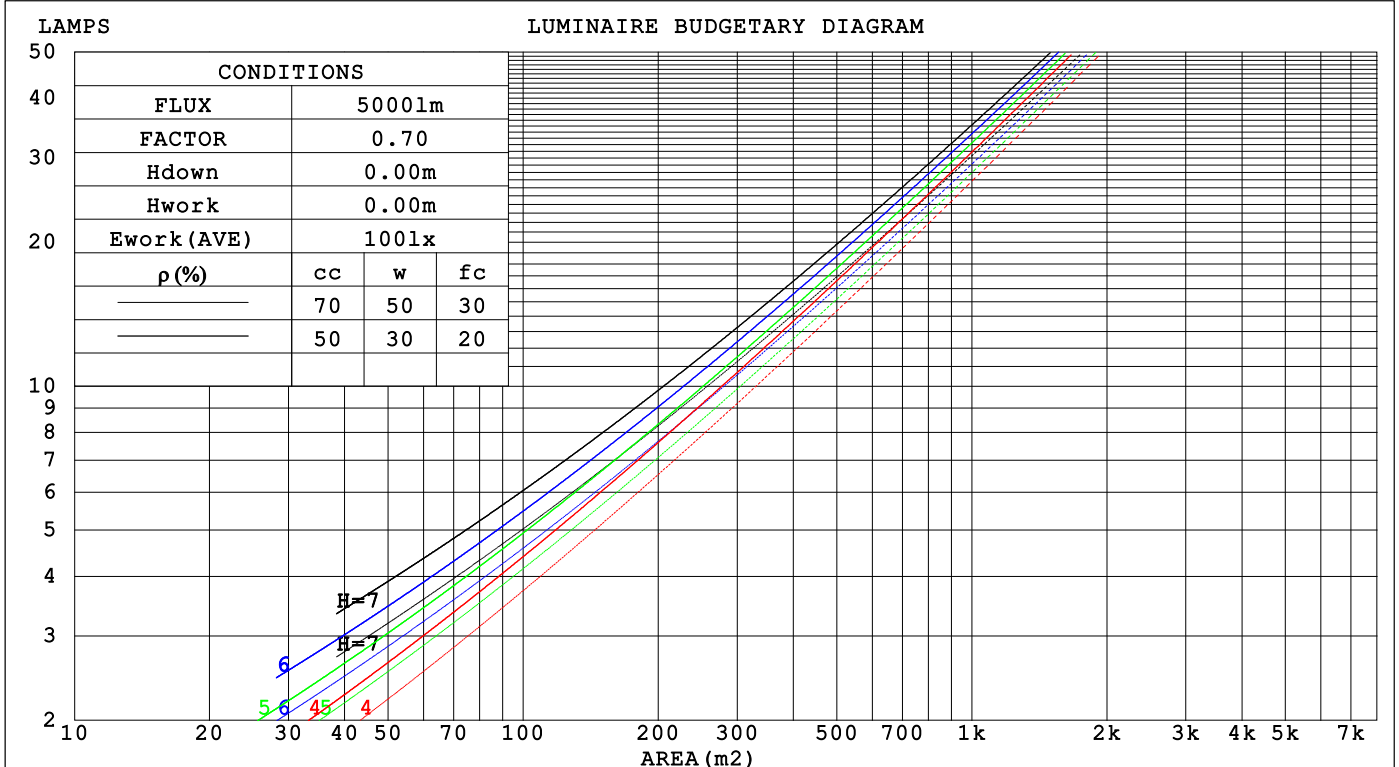
C Range: 0 - 90DEG
 C Interval: 90.0DEG
 Test Speed: HIGH
 Temperature:25.3 °C
 Operators:JT
 Test Date:2024-12-15

γ Range: 0 - 180DEG
 γ Interval: 1.0DEG
 Test System:EVERFINE GO-2000A_V1 SYSTEM V2.0.295
 Humidity:65.0%
 Test Distance:7.578m [K=1.0528]
 Remarks:

CU AND LUMINAIRE BUDGETARY ESTIMATE DIAGRAM

Test:U:221.38V I:0.1505A P:32.050W PF:0.9618 Freq:50.00Hz Lamp Flux:3872.8x1 lm		
NAME: 6060M-120LM-CCT(3000K-4000K)-UGR	TYPE: LED	WEIGHT:
SPEC.: 6060M-120LM-CCT(3000K-4000K)-UGR	DIM.: 595*595	SERIAL No.:
MFR.: JT	SUR.: 0.595*0.595	Shielding Angle:

pcc	80%			70%			50%			30%			10%			0
	50%	30%	10%	50%	30%	10%	50%	30%	10%	50%	30%	10%	50%	30%	10%	
pw																0
pfc	20%			20%			20%			20%			20%			0
RCR	RCR:Room Cavity Ratio Coefficients of Utilization(CU)															
0.0	1.19	1.19	1.19	1.16	1.16	1.16	1.11	1.11	1.11	1.06	1.06	1.06	1.02	1.02	1.02	.00
1.0	1.06	1.02	.99	1.04	1.01	.98	.00	.97	.94	.96	.94	.92	.92	.91	.89	.87
2.0	.95	.89	.84	.93	.88	.83	.89	.85	.81	.86	.83	.79	.83	.80	.77	.75
3.0	.85	.78	.72	.83	.77	.72	.81	.75	.70	.78	.73	.69	.75	.71	.68	.66
4.0	.77	.69	.63	.75	.68	.63	.73	.67	.62	.71	.65	.61	.69	.64	.60	.58
5.0	.70	.62	.56	.68	.61	.55	.66	.60	.55	.65	.59	.54	.63	.58	.54	.52
6.0	.63	.55	.50	.63	.55	.49	.61	.54	.49	.59	.53	.49	.58	.52	.48	.46
7.0	.58	.50	.45	.57	.50	.44	.56	.49	.44	.55	.48	.44	.53	.48	.44	.42
8.0	.54	.46	.40	.53	.45	.40	.52	.45	.40	.50	.44	.40	.49	.44	.40	.38
9.0	.50	.42	.37	.49	.42	.37	.48	.41	.37	.47	.41	.36	.46	.40	.36	.35
10.0	.46	.39	.34	.45	.38	.34	.45	.38	.34	.44	.38	.33	.43	.37	.33	.32



C Range: 0 - 90DEG
 C Interval: 90.0DEG
 Test Speed: HIGH
 Temperature:25.3°C
 Operators:JT
 Test Date:2024-12-15

γ Range: 0 - 180DEG
 γ Interval: 1.0DEG
 Test System:EVERFINE GO-2000A_V1 SYSTEM V2.0.295
 Humidity:65.0%
 Test Distance:7.578m [K=1.0528]
 Remarks:

WEC AND CCEC

Test:U:221.38V I:0.1505A P:32.050W PF:0.9618 Freq:50.00Hz Lamp Flux:3872.8x1 lm		
NAME: 6060M-120LM-CCT(3000K-4000K)-UGR	TYPE: LED	WEIGHT:
SPEC.: 6060M-120LM-CCT(3000K-4000K)-UGR	DIM.: 595*595	SERIAL No.:
MFR.: JT	SUR.: 0.595*0.595	Shielding Angle:

ρ _{CC}	80%			70%			50%			30%			10%			0
ρ _w	50%	30%	10%	50%	30%	10%	50%	30%	10%	50%	30%	10%	50%	30%	10%	0
ρ _{fc}	20%			20%			20%			20%			20%			0
RCR	RCR:Room Cavity Ratio						Wall Exitance Coefficients(WEC)									
0.0																
1.0	.265	.151	.048	.258	.147	.047	.245	.141	.045	.233	.135	.043	.222	.129	.042	
2.0	.250	.137	.042	.244	.134	.041	.233	.129	.040	.222	.125	.039	.213	.120	.038	
3.0	.234	.124	.037	.228	.122	.037	.219	.118	.036	.209	.115	.035	.201	.111	.034	
4.0	.218	.113	.033	.214	.112	.033	.205	.109	.032	.197	.106	.032	.189	.103	.031	
5.0	.204	.104	.030	.200	.103	.030	.192	.100	.029	.185	.098	.029	.178	.095	.029	
6.0	.191	.096	.027	.187	.095	.027	.181	.093	.027	.174	.090	.027	.168	.088	.026	
7.0	.180	.089	.025	.176	.088	.025	.170	.086	.025	.164	.084	.025	.159	.083	.024	
8.0	.169	.083	.023	.166	.082	.023	.161	.080	.023	.155	.079	.023	.151	.077	.023	
9.0	.160	.077	.022	.157	.077	.021	.152	.075	.021	.147	.074	.021	.143	.073	.021	
10.0	.151	.072	.020	.149	.072	.020	.144	.071	.020	.140	.070	.020	.136	.068	.020	

ρ _{CC}	80%			70%			50%			30%			10%			0
ρ _w	50%	30%	10%	50%	30%	10%	50%	30%	10%	50%	30%	10%	50%	30%	10%	0
ρ _{fc}	20%			20%			20%			20%			20%			0
RCR	RCR:Room Cavity Ratio						Ceiling Cavity Exitance Coefficients(CCEC)									
0.0																
1.0	.191	.191	.191	.163	.163	.163	.111	.111	.111	.064	.064	.064	.020	.020	.020	
2.0	.178	.157	.138	.152	.135	.119	.104	.093	.082	.060	.054	.048	.019	.017	.015	
3.0	.167	.133	.104	.143	.114	.090	.098	.079	.062	.057	.046	.037	.018	.015	.012	
4.0	.158	.115	.080	.136	.099	.069	.093	.069	.049	.054	.040	.029	.017	.013	.009	
5.0	.150	.101	.063	.129	.087	.055	.088	.061	.039	.051	.036	.023	.016	.012	.008	
6.0	.142	.090	.052	.122	.078	.045	.084	.054	.032	.049	.032	.019	.016	.010	.006	
7.0	.135	.081	.043	.116	.071	.037	.080	.049	.026	.047	.029	.016	.015	.009	.005	
8.0	.129	.074	.036	.111	.065	.032	.076	.045	.022	.044	.027	.013	.014	.009	.004	
9.0	.123	.069	.031	.106	.059	.027	.073	.042	.019	.043	.025	.012	.014	.008	.004	
10.0	.117	.064	.027	.101	.055	.024	.070	.039	.017	.041	.023	.010	.013	.008	.003	
10.0	.112	.059	.024	.096	.052	.021	.067	.036	.015	.039	.021	.009	.013	.007	.003	

C Range: 0 - 90DEG
 C Interval: 90.0DEG
 Test Speed: HIGH
 Temperature:25.3 °C
 Operators:JT
 Test Date:2024-12-15

γ Range: 0 - 180DEG
 γ Interval: 1.0DEG
 Test System:EVERFINE GO-2000A_V1 SYSTEM V2.0.295
 Humidity:65.0%
 Test Distance:7.578m [K=1.0528]
 Remarks:

UGR(Unified Glare Rating) Table

Test:U:221.38V I:0.1505A P:32.050W PF:0.9618 Freq:50.00Hz Lamp Flux:3872.8x1 lm		
NAME: 6060M-120LM-CCT(3000K-4000K)-UGR	TYPE: LED	WEIGHT:
SPEC.: 6060M-120LM-CCT(3000K-4000K)-UGR	DIM.: 595*595	SERIAL No.:
MFR.: JT	SUR.: 0.595*0.595	Shielding Angle:

ceiling/cavity	0.7	0.7	0.5	0.5	0.3	0.7	0.7	0.5	0.5	0.3
walls	0.5	0.3	0.5	0.3	0.3	0.5	0.3	0.5	0.3	0.3
working plane	0.2	0.2	0.2	0.2	0.2	0.2	0.2	0.2	0.2	0.2

Room dimensions	Viewed crosswise					Viewed endwise				
x = 2H y = 2H	14.6	15.9	14.8	16.1	16.3	15.3	16.6	15.5	16.8	17.0
3H	15.4	16.7	15.7	16.9	17.1	16.0	17.2	16.3	17.5	17.7
4H	15.9	17.1	16.2	17.3	17.6	16.4	17.5	16.7	17.8	18.0
6H	16.3	17.4	16.6	17.6	17.9	16.8	17.9	17.1	18.1	18.4
8H	16.4	17.5	16.8	17.8	18.0	17.0	18.1	17.3	18.3	18.6
12H	16.6	17.6	16.9	17.9	18.2	17.3	18.3	17.6	18.6	18.9
4H 2H	14.9	16.1	15.2	16.3	16.6	15.5	16.6	15.8	16.9	17.1
3H	16.0	17.0	16.3	17.3	17.6	16.4	17.5	16.8	17.7	18.0
4H	16.6	17.5	17.0	17.9	18.2	17.0	17.9	17.3	18.2	18.5
6H	17.1	18.0	17.5	18.3	18.7	17.5	18.3	17.9	18.7	19.1
8H	17.4	18.1	17.8	18.5	18.9	17.9	18.6	18.3	19.0	19.4
12H	17.6	18.3	18.0	18.7	19.1	18.3	19.0	18.7	19.3	19.7
8H 4H	16.8	17.6	17.3	18.0	18.4	17.1	17.9	17.6	18.3	18.7
6H	17.5	18.2	18.0	18.6	19.0	17.9	18.5	18.3	18.9	19.4
8H	17.9	18.4	18.3	18.9	19.3	18.4	18.9	18.8	19.4	19.8
12H	18.2	18.7	18.7	19.2	19.6	18.9	19.4	19.4	19.9	20.3
12H 4H	16.9	17.6	17.3	17.9	18.3	17.2	17.9	17.6	18.2	18.6
6H	17.6	18.2	18.1	18.6	19.1	18.0	18.5	18.4	19.0	19.4
8H	18.0	18.5	18.5	19.0	19.4	18.5	19.0	19.0	19.5	19.9

Variations with the observer position at spacings(CIE Pub.117):		
S = 1.0H	+ 0.4 / - 0.5	+ 0.3 / - 0.4
1.5H	+ 0.4 / - 0.5	+ 0.2 / - 0.4
2.0H	+ 0.5 / - 0.5	+ 0.8 / - 0.6

CIE Pub.117, 3873 lm Total Lamp Luminous Flux Corrected (8log(F/F0) = 4.7)
Area: 0.354 m2

C Range: 0 - 90DEG
C Interval: 90.0DEG
Test Speed: HIGH
Temperature:25.3°C
Operators:JT
Test Date:2024-12-15

γ Range: 0 - 180DEG
γ Interval: 1.0DEG
Test System:EVERFINE GO-2000A_V1 SYSTEM V2.0.295
Humidity:65.0%
Test Distance:7.578m [K=1.0528]
Remarks:

UTILIZATION FACTORS TABLE

Test:U:221.38V I:0.1505A P:32.050W PF:0.9618 Freq:50.00Hz Lamp Flux:3872.8x1 lm		
NAME: 6060M-120LM-CCT(3000K-4000K)-UGR	TYPE: LED	WEIGHT:
SPEC.: 6060M-120LM-CCT(3000K-4000K)-UGR	DIM.: 595*595	SERIAL No.:
MFR.: JT	SUR.: 0.595*0.595	Shielding Angle:

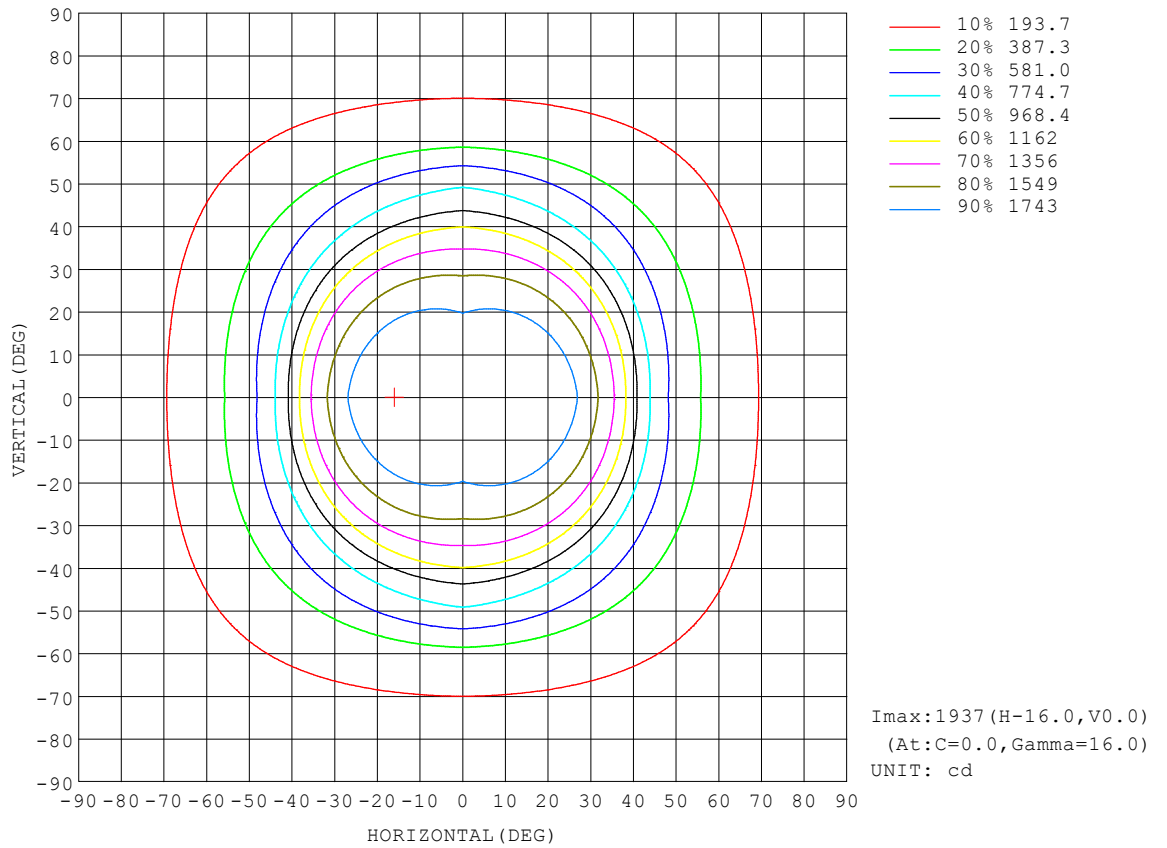
REFLECTANCE										
Ceiling	0.8	0.8	0.8	0.7	0.7	0.7	0.5	0.5	0.5	0
Walls	0.7	0.5	0.3	0.7	0.5	0.3	0.7	0.5	0.3	0
Working plane	0.2	0.2	0.2	0.2	0.2	0.2	0.2	0.2	0.2	0
ROOM INDEX	UTILIZATION FACTORS (PERCENT) $k(RI) \times RCR = 5$									
k = 0.60	67	57	51	66	57	51	65	56	51	45
0.80	76	67	61	76	66	60	74	66	60	54
1.00	84	75	69	83	74	68	81	75	68	62
1.25	90	82	76	89	81	75	86	79	74	68
1.50	94	86	81	93	85	80	90	84	79	73
2.00	100	93	88	98	92	87	95	90	85	78
2.50	103	97	92	101	95	91	97	93	89	81
3.00	106	100	95	104	98	94	100	96	92	84
4.00	109	104	100	106	102	99	102	99	96	88
5.00	111	107	103	108	105	102	104	101	99	90
ROOM INDEX	UF(total)									Direct
According to DIN EN 13032-2 2004			Suspended				SHRNOM = 1.25			

C Range: 0 - 90DEG
 C Interval: 90.0DEG
 Test Speed: HIGH
 Temperature:25.3°C
 Operators:JT
 Test Date:2024-12-15

γ Range: 0 - 180DEG
 γ Interval: 1.0DEG
 Test System:EVERFINE GO-2000A_V1 SYSTEM V2.0.295
 Humidity:65.0%
 Test Distance:7.578m [K=1.0528]
 Remarks:

ISOCANDELA DIAGRAM

Test:U:221.38V I:0.1505A P:32.050W PF:0.9618 Freq:50.00Hz Lamp Flux:3872.8x1 lm		
NAME: 6060M-120LM-CCT(3000K-4000K)-UGR	TYPE: LED	WEIGHT:
SPEC.: 6060M-120LM-CCT(3000K-4000K)-UGR	DIM.: 595*595	SERIAL No.:
MFR.: JT	SUR.: 0.595*0.595	Shielding Angle:

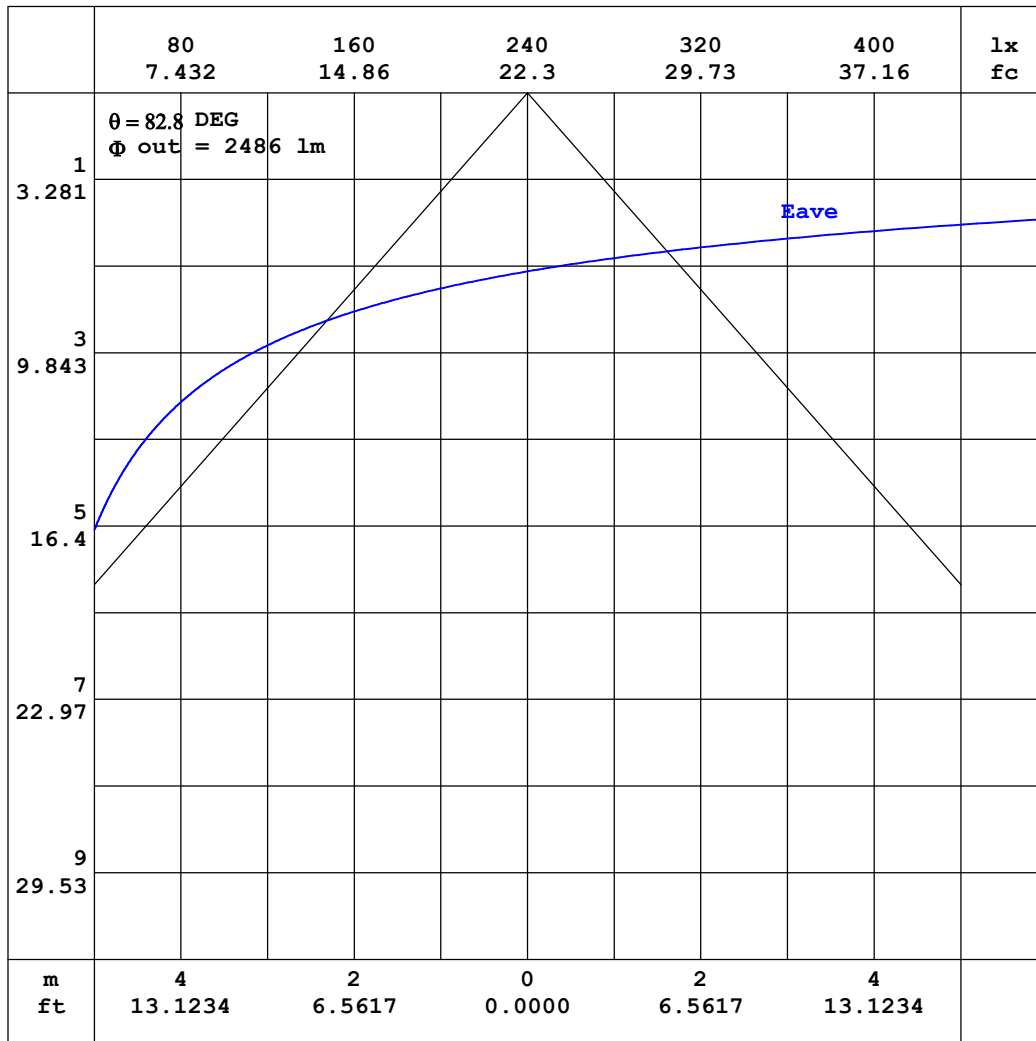


C Range: 0 - 90DEG
 C Interval: 90.0DEG
 Test Speed: HIGH
 Temperature:25.3°C
 Operators:JT
 Test Date:2024-12-15

γ Range: 0 - 180DEG
 γ Interval: 1.0DEG
 Test System:EVERFINE GO-2000A_V1 SYSTEM V2.0.295
 Humidity:65.0%
 Test Distance:7.578m [K=1.0528]
 Remarks:

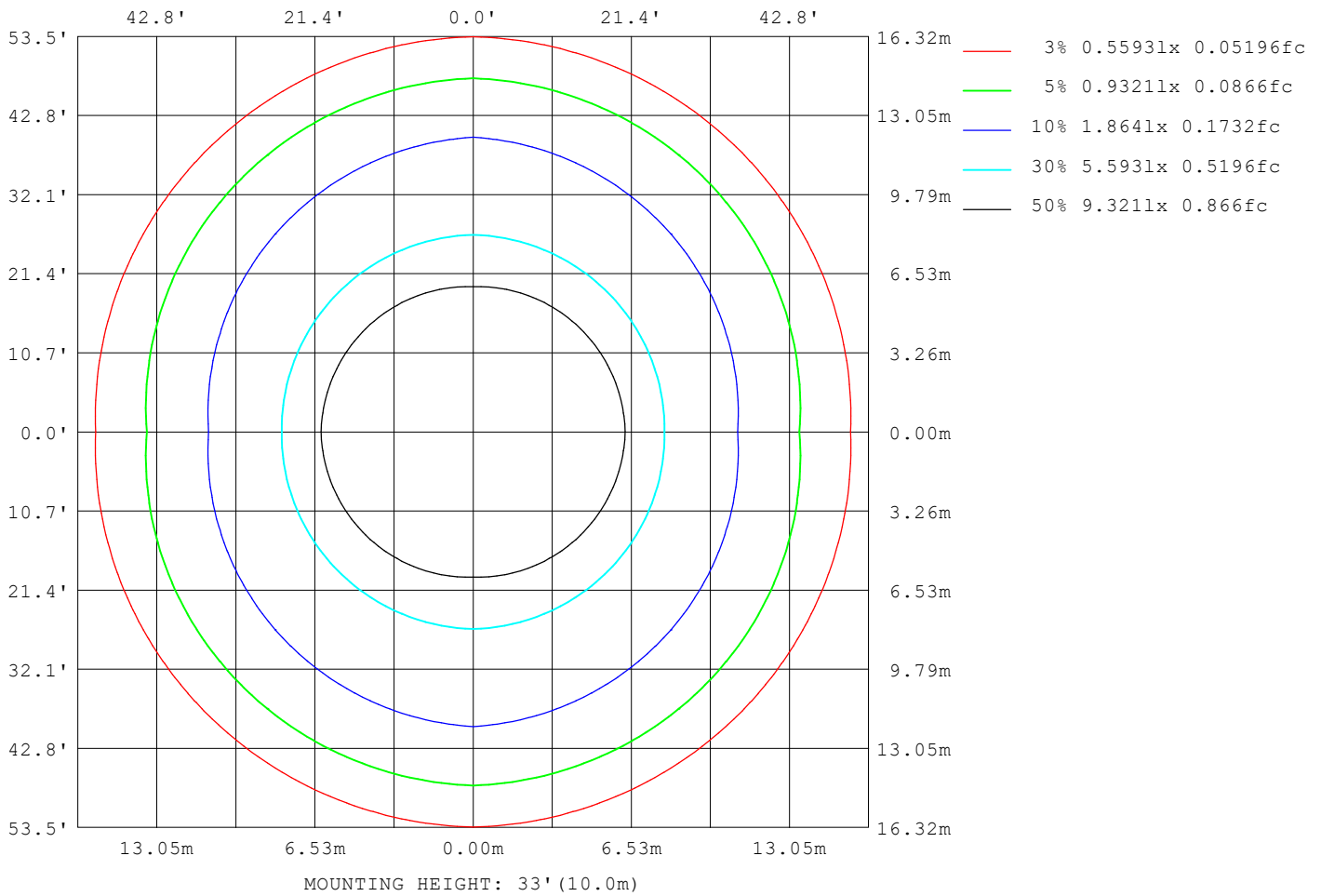
AAI CURVES

Test:U:221.38V I:0.1505A P:32.050W PF:0.9618 Freq:50.00Hz Lamp Flux:3872.8x1 lm		
NAME: 6060M-120LM-CCT(3000K-4000K)-UGR	TYPE: LED	WEIGHT:
SPEC.: 6060M-120LM-CCT(3000K-4000K)-UGR	DIM.: 595*595	SERIAL No.:
MFR.: JT	SUR.: 0.595*0.595	Shielding Angle:



ISOLUX DIAGRAM

Test:U:221.38V I:0.1505A P:32.050W PF:0.9618 Freq:50.00Hz Lamp Flux:3872.8x1 lm		
NAME: 6060M-120LM-CCT(3000K-4000K)-UGR	TYPE: LED	WEIGHT:
SPEC.: 6060M-120LM-CCT(3000K-4000K)-UGR	DIM.: 595*595	SERIAL No.:
MFR.: JT	SUR.: 0.595*0.595	Shielding Angle:



C Range: 0 - 90DEG
 C Interval: 90.0DEG
 Test Speed: HIGH
 Temperature:25.3 °C
 Operators:JT
 Test Date:2024-12-15

γ Range: 0 - 180DEG
 γ Interval: 1.0DEG
 Test System:EVERFINE GO-2000A_V1 SYSTEM V2.0.295
 Humidity:65.0%
 Test Distance:7.578m [K=1.0528]
 Remarks:

LED Avg.L Report

Test:U:221.38V I:0.1505A P:32.050W PF:0.9618 Freq:50.00Hz Lamp Flux:3872.8x1 lm		
NAME: 6060M-120LM-CCT(3000K-4000K)-UGR	TYPE: LED	WEIGHT:
SPEC.: 6060M-120LM-CCT(3000K-4000K)-UGR	DIM.: 595*595	SERIAL No.:
MFR.: JT	SUR.: 0.595*0.595	Shielding Angle:

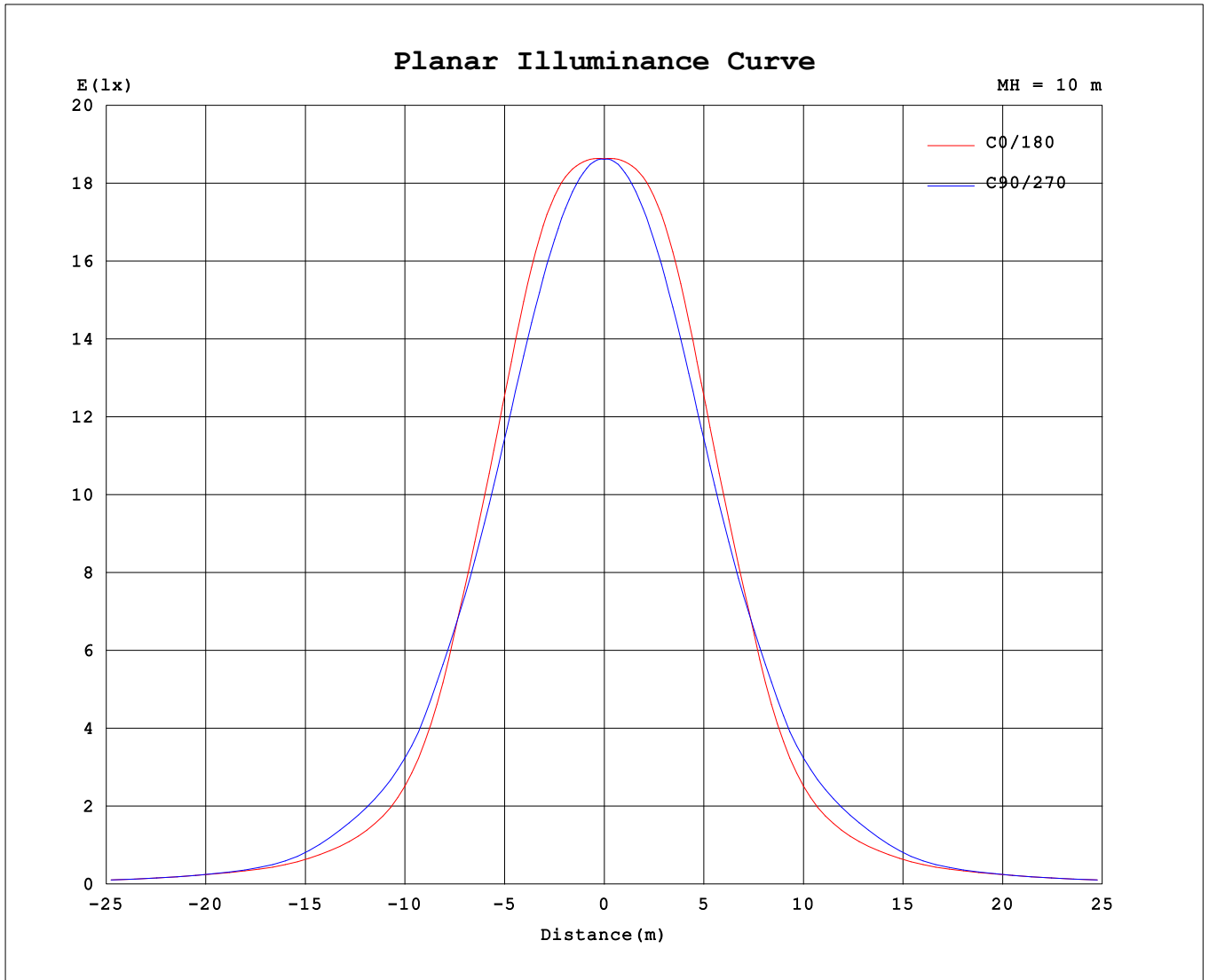
AvgL	cd/m2
L_0~180 (65) av	1723
L_0~180 (75) av	1642
L_0~180 (85) av	1642
L_90~270 (65) av	1717
L_90~270 (75) av	1537
L_90~270 (85) av	2447
L_45 (65) av	1720
L_45 (75) av	1576
L_45 (85) av	2145

Standard: GB/T 29293-2012

C Range: 0 - 90DEG
 C Interval: 90.0DEG
 Test Speed: HIGH
 Temperature:25.3℃
 Operators:JT
 Test Date:2024-12-15

γ Range: 0 - 180DEG
 γ Interval: 1.0DEG
 Test System:EVERFINE GO-2000A_V1 SYSTEM V2.0.295
 Humidity:65.0%
 Test Distance:7.578m [K=1.0528]
 Remarks:

Planar Illuminance Curve



C Range: 0 - 90DEG
C Interval: 90.0DEG
Test Speed: HIGH
Temperature: 25.3 °C
Operators: JT
Test Date: 2024-12-15

γ Range: 0 - 180DEG
γ Interval: 1.0DEG
Test System: EVERFINE GO-2000A_V1 SYSTEM V2.0.295
Humidity: 65.0%
Test Distance: 7.578m [K=1.0528]
Remarks:

LUMINOUS DISTRIBUTION INTENSITY DATA

Test:U:221.38V I:0.1505A P:32.050W PF:0.9618 Freq:50.00Hz Lamp Flux:3872.8x1 lm		
NAME: 6060M-120LM-CCT(3000K-4000K)-UGR	TYPE: LED	WEIGHT:
SPEC.: 6060M-120LM-CCT(3000K-4000K)-UGR	DIM.: 595*595	SERIAL No.:
MFR.: JT	SUR.: 0.595*0.595	Shielding Angle:

Table--1

UNIT: cd

C (DEG) \ γ (DEG)	0	90	180	270															
0	1863	1862	1863	1862															
5	1880	1860	1880	1860															
10	1913	1841	1913	1841															
15	1937	1803	1937	1803															
20	1909	1738	1909	1738															
25	1803	1638	1803	1638															
30	1625	1503	1625	1503															
35	1387	1347	1387	1347															
40	1028	1157	1028	1157															
45	713	917	713	917															
50	523	746	523	746															
55	404	543	404	543															
60	311	347	311	347															
65	258	257	258	257															
70	184	194	184	194															
75	150	141	150	141															
80	89.3	108	89.3	108															
85	50.7	75.5	50.7	75.5															
90	0.12	14.8	0.12	14.8															
95	0.00	0.00	0.00	0.00															
100	0.00	0.00	0.00	0.00															
105	0.00	0.00	0.00	0.00															
110	0.00	0.00	0.00	0.00															
115	0.00	0.00	0.00	0.00															
120	0.00	0.00	0.00	0.00															
125	0.03	0.00	0.03	0.00															
130	0.25	0.19	0.25	0.19															
135	0.48	0.38	0.48	0.38															
140	0.69	0.58	0.69	0.58															
145	0.88	0.79	0.88	0.79															
150	1.07	1.00	1.07	1.00															
155	1.28	1.23	1.28	1.23															
160	1.52	1.47	1.52	1.47															
165	1.75	1.70	1.75	1.70															
170	1.93	1.88	1.93	1.88															
175	2.08	2.03	2.08	2.03															
180	2.16	2.10	2.16	2.10															

C Range: 0 - 90DEG
 C Interval: 90.0DEG
 Test Speed: HIGH
 Temperature:25.3°C
 Operators:JT
 Test Date:2024-12-15

γ Range: 0 - 180DEG
 γ Interval: 1.0DEG
 Test System:EVERFINE GO-2000A_V1 SYSTEM V2.0.295
 Humidity:65.0%
 Test Distance:7.578m [K=1.0528]
 Remarks: