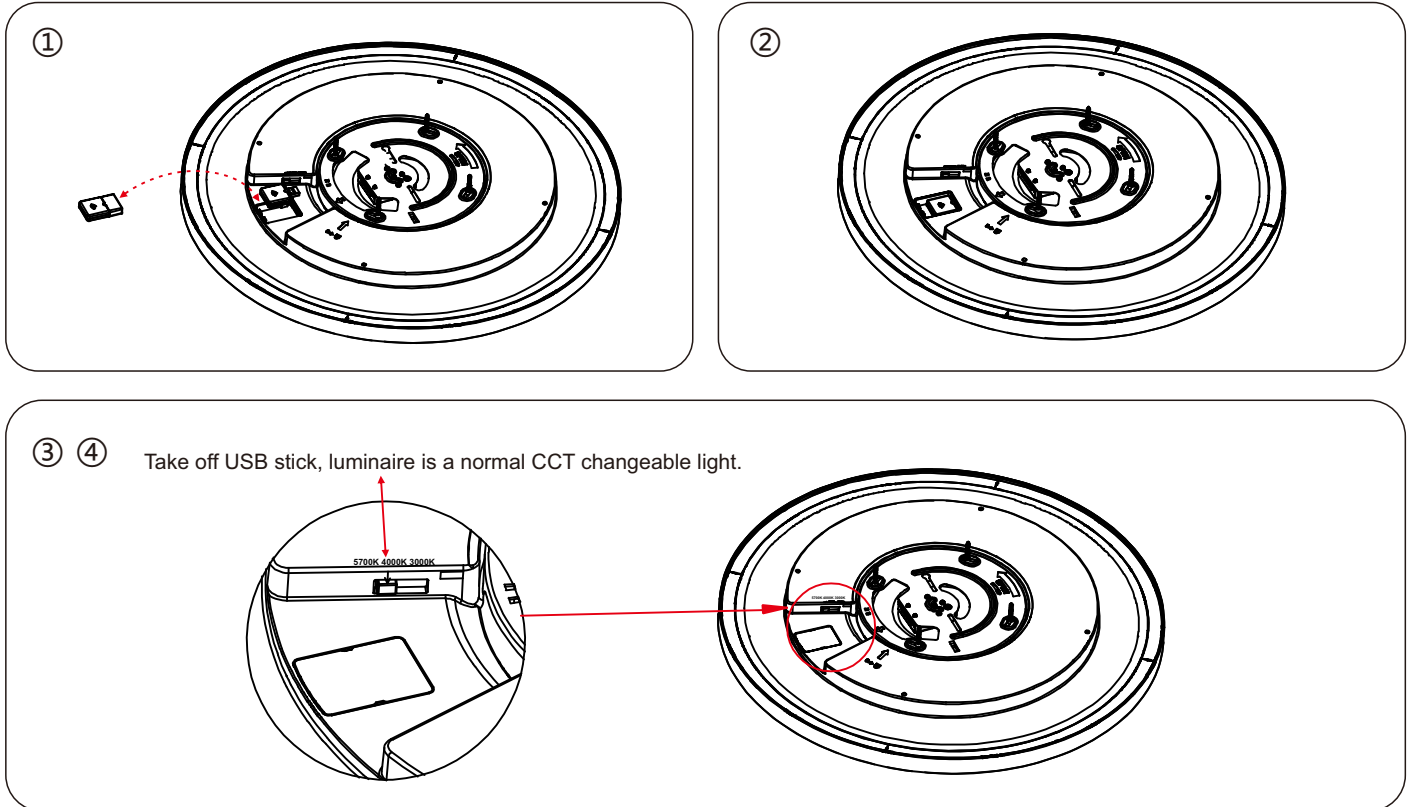


SmartDeco-MU-ZIGBEE

1. Check the USB whether with Zigbee function.
2. Insert the USB.
3. Lock the USB cover well.
4. While USB stick is inserted into luminaire, it will be detected and the luminaire will switch to App control mode automatically.
Take off USB stick, luminaire is a normal CCT changeable light.



APP operation steps:

1. Download the Hue APP (or similar App that support Zigbee application) and register,
2. Search HUE in HUE bridge. While successfully search HUE, will instruct HUE to send receiving command.
3. Zigbee device reset: Turn on/off the luminary 7 times, please wait 3-4 seconds after each switch off until the light is fast blinking.
4. Use mobile to choose HUE-WIFI router and enter password. Choose adding luminary. While blinking stop, means luminary is successfully researched and luminary name will appear
5. Use App to control luminary
6. Please reset/pair the luminaire according to the user manual when APP has upgrade edition.

