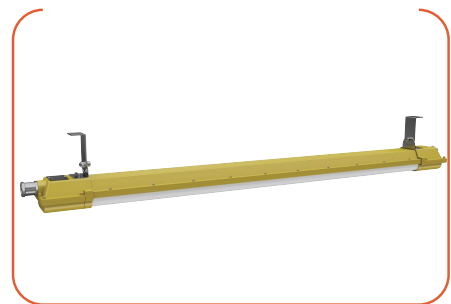
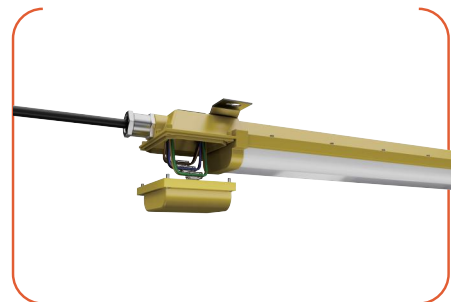


20W/40W/60W/75W

Explosion proof
Light



This hazardous area explosion proof light has good explosion-proof function and is suitable for explosives of Zone I, Zone II and Zone 21, Zone 22 include gas environment and various inflammable and explosive places. It's mainly used in railway, electric power, metallurgy, petroleum, petrochemical, chemical, steel, aviation, ship and various types of factories, stations, large facilities, venues and other places.

STANDARDS/CERTIFICATES

- | | |
|---------------------------|------------------|
| ◀ IEC 60598-1 | ◀ EN61000-3-2 |
| ◀ IEC 60598-2-5 | ◀ EN61000-3-3 |
| ◀ EN 60598-2-5 | ◀ EN61547 |
| ◀ EN IEC 60598-1 | ◀ EN ISO 60079-0 |
| ◀ EN IEC 62031 | ◀ EN60079-1 |
| ◀ EN 62471 & IEC TR 62778 | ◀ EN 60079-31 |
| ◀ EN 62493 | ◀ EN 1127-1 |

II 2G Ex mb eb IIB T4 Gb
II 2D Ex tb IIIC T (Max 110°C) Db

Product data

General Information

Light source engine type	LED
Driver included	Tridonic
Lifetime	L70B10 >102000hr Light maintenance assessments to TM-21 based on LM-80 data.
Warranty	5 years

Operating and Electrical

Input Voltage / Frequency	220-240V, 50~60Hz
Electrical class	Class I
Power factor (at full load)	>0.95
Surge Protection	Luminaire surge protection level until 1 kV differential mode and 2 kV common mode

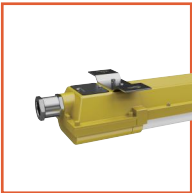
Controls and Dimming

Functions	DALI (for option)
Wire through	3x2.5mm ² wire through (for option) 5x2.5mm ² wire through (for option)
Cables	NA

Maintenance and Assembly

Installation methods	Suspension, Surface mounting
Accessories	Bracket, Cable gland

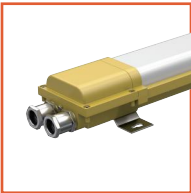
Accessory



Bracket



Bracket



Cable gland

Light Technical

Luminous Efficacy (rated) (Nom)	140lm/w
Wattage	20W/40W/60W/75W
Luminous Flux	2800/5600/8400/10500LM
Upward light output ratio (ULR)	Between 0.00% and 0.35%
General ingress protection	Luminaire: IP66 (EN IEC 60598-1)
Protection against impacts	IK08 (IEC 62262)
Color rendering index (CRI)	>80
LED colour temperature	3000K/4000K/5000K/5700K/6500K
Optical cover type	Symmetric
Photometric distributions	120°
Total harmonic distortion	<15% (220Vac/50Hz, Full load, 25 °C)
McAdam ellipse	≤5
Ambient temperature range	-40~+45 °C

Mechanical and Housing

Housing Material	AL6063+ADC12
Optic material	PC
Housing Color	RAL1003、RAL7001